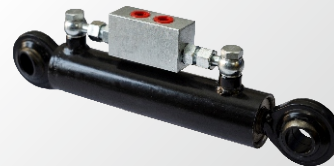


Since - 2014

mac **power**™

Hydraulic System



A name you can trust

ABOUT US

We are looking forward to introduce our selves as a top manufacturers of Hydraulic / Assemblies components companies there of and Supplying to the Tractors Automobiles industries.

Our firm is being established since 2014 in Automobiles Industries & Material Handling to Accomplished our selves towards newer heights of success & provide a complete product line of Hydraulic Jack, Control Valve and QRC as per the of Specified Guidelines.

We are very much enthusiastic about the requirement of our valuable clients & try our best to satisfying there requirements.

OUR GOAL

- As we are going strongly towards the 3rd decade of a Vibrant Economy.
- We are stepping foreword for set a new challenges.
- We have to approach the conditions with a fresh & focussed mind from our past Experiences

INTRA PRODUCTION BUILDUP



CNC



VMC



GRINDER



BENDING MACHINE



BORE FINISHING MACHINE



ROBOTIC WELDING MACHINE

APPLICATION

REVERSIBLE MB PLOUGH



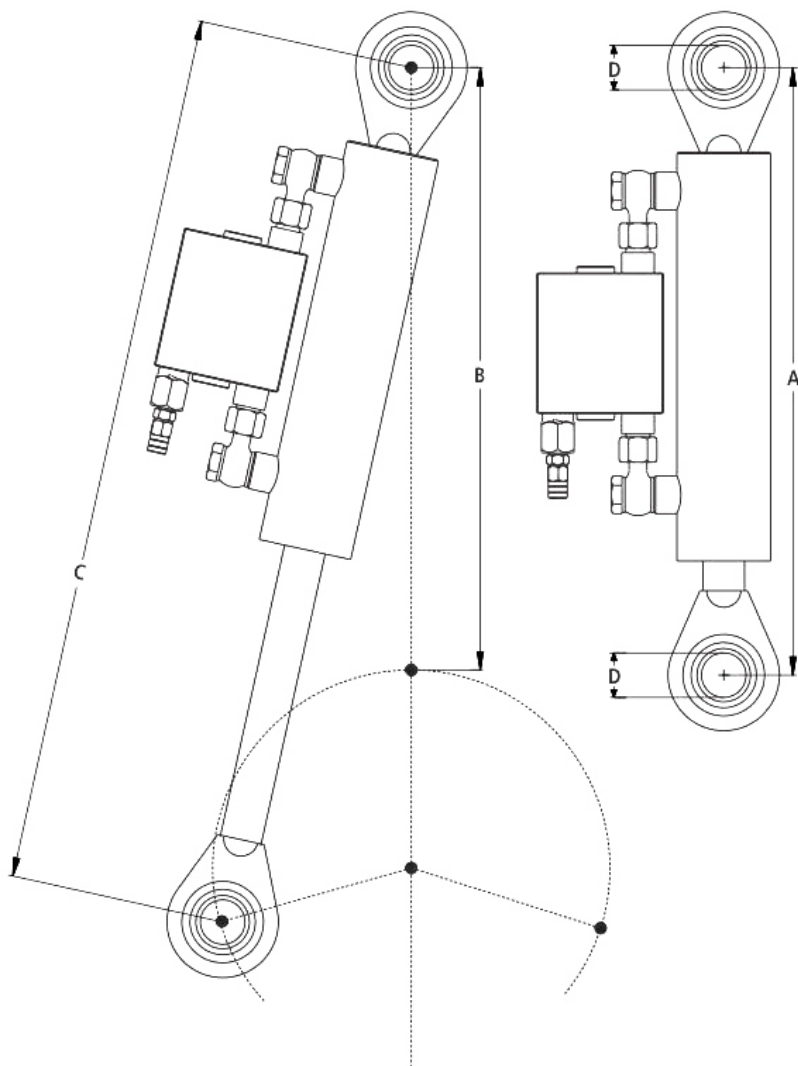
TECHNICAL SPECIFICATIONS

ADVANTAGE

- The turning cylinder is power save and eco-green.
- The maintenance cost is very low and easy to operate to the farmer.
Compared to mechanical plough and also benefited to the crop.
- Every year there is a growth in crop to farmer and benefited for the life of land.
- All of our process are certified according to the latest industrial standards and guarantee reliable and verifiable quality at the highest level.

MATERIAL SPECIFICATIONS

Cylinder Pipe	: Honed Tube – ST52
Rod	: Carbon Steel Hard Chrome Plated
Spool Body	: Carbon Steel
Spool	: Carbon Steel Hardened
Seals	: NBR



DESCRIPTION OF PLOUGH TURNING CYLINDER

SR. NO.	TYPE	PISTON	ROD	STROKE	A	B+	C	D
M-1	PTC-30/50-365	50	28	160	365	370	525	30
M-2	PTC-30/50-405	50	28	160	405	410	565	30
M-3	PTC-30/50-428	50	28	180	428	433	608	30
M-4	PTC-30/60-365	60	36	160	365	370	525	30
M-5	PTC-30/60-405	60	36	160	405	410	565	30
M-6	PTC-30/40-275	40	20	130	275	280	405	25
M-7	PTC-25/40-320	40	22	155	320	325	475	25

All dimension are in MM

*B For Fitting parameter.

**The type and sizes will very as per requirement of the cutomers.

PTC - SERIES



PLOUGH OVER TURNING VALVE



USE AND OPERATION:

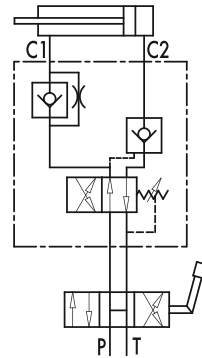
This valve designed for use on cylinders for reversible plough, in order to obtain the automatic inversion of the oil flow and therefore of the motion of the hydraulic cylinder to rotate the plough. It is equipped with a single acting check valve which provides greater safety and gives the possibility to position and lock the cylinder at an end point.

The reversal of the piston rod is carried out by means of a compensated maximum pressure valve exactly in the dead centre of the plough, developing greater power and speed. This valve can also be mounted on heavy and unbalanced ploughs.

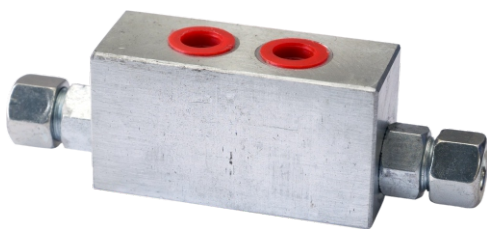
MATERIALS AND FEATURES:

Body	: Zinc-Plated Steel
Internal Parts	: Hardened and Ground Steel
Seals	: BUNA N Standard

These valves are supplied with exchange pressure at about 150 Bar; according to your requirements, pressure setting can be modified by acting on the pressure regulator.



PAILOT OPERATE CHECK VALVE



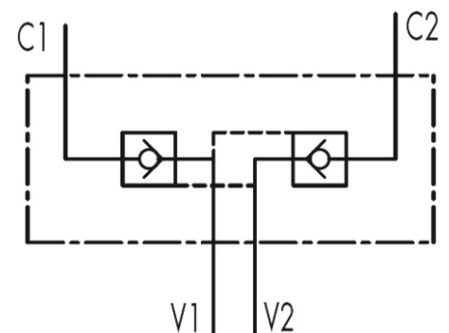
USE AND OPERATION:

This valve designed for use on cylinders for reversible plough, in order to obtain the automatic inversion of the oil flow and therefore of the motion of the hydraulic cylinder to rotate the plough. It is equipped with a double acting check valve which provides greater safety and gives the possibility to position and lock the cylinder at an end point.

MATERIALS AND FEATURES:

Body	: Zinc-Plated Steel
Internal Parts	: Hardened and Ground Steel
Seals	: BUNA N Standard

These valves are supplied with exchange pressure at about 150 Bar; according to your requirements, pressure setting can be modified by acting on the pressure regulator.



DIRECTOR CONTROL VALVE



MATERIAL SPECIFICATIONS

Body : High Strength Cast Iron

Spool : Carbon steel, Hardened and Chrome plated

Seals : NBR

APPLICATION

TRACTOR & OTHERS



TECHNICAL SPECIFICATIONS

Max. Inlet Flow	60 lpm
Max. Pressure on Supply Port (P)	280 bar
Max. Pressure on Work Port (A-B)	300 bar
Max. Back Pressure Port (T)	30 bar
Fluid Temperature (with NBR Seals)	-20° C to +80° C (70°F to 180°F)
Oil Viscosity	from 15 to 75 mm ² /s
Port Thread Size	½"-14BSP*
Carry over Port	N Port
Single load hold check valve	LC
Max. Spool Leakage (at 100 bar, Temperature 50° C)	3 cc/min
Number of Spool	1 to 3
Fluid	Mineral Base Oil
Oil Filtration	< 30µm

MASSY CONTROL VALVE

DESCRIPTION

This valve is a special directional control for Massey Ferguson Tractors. It is Assembled directly on lift cover and used to change between external and internal hydraulics in tractor.

MATERIAL SPECIFICATIONS

Body : High Strength Cast Iron

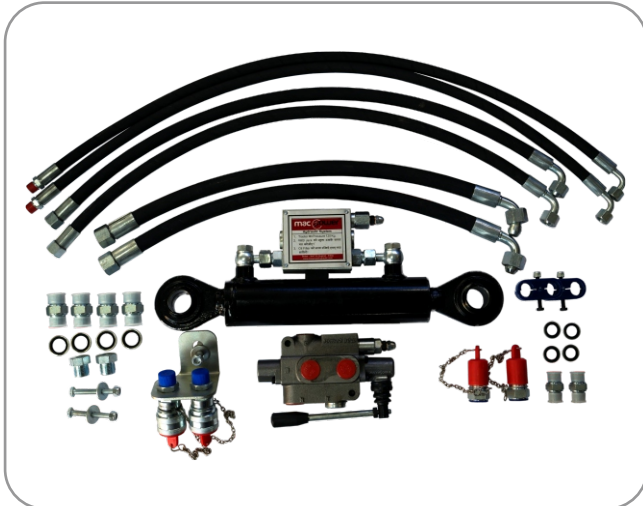
Spool : Carbon steel, Hardened and Chrome plated

Seals : NBR



QUICK RELEASE COUPLING (QRC)

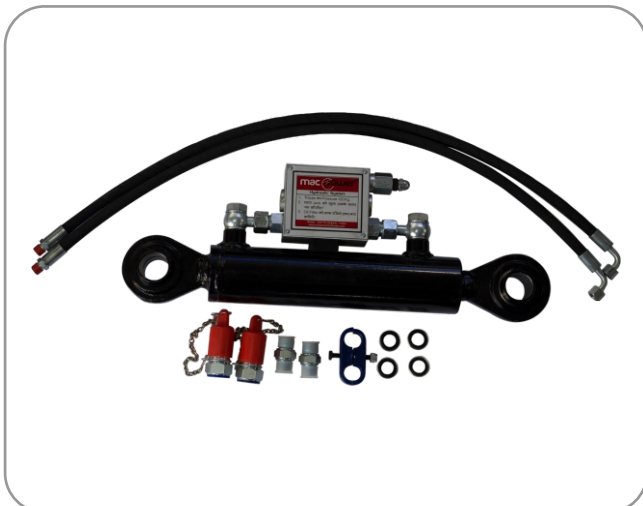




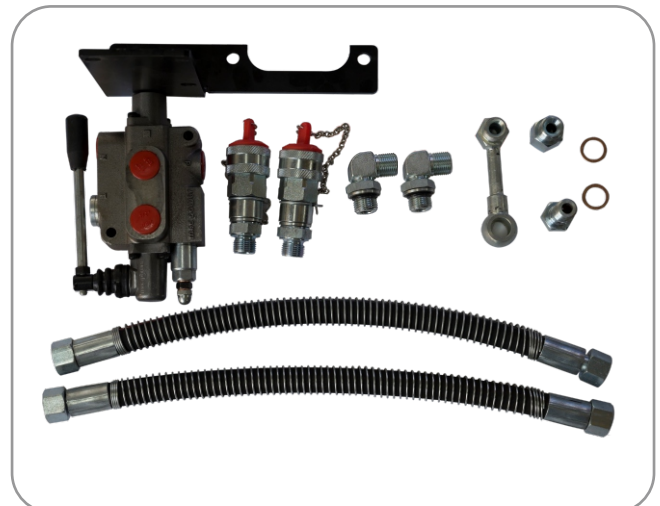
PLOUGH FULL KIT



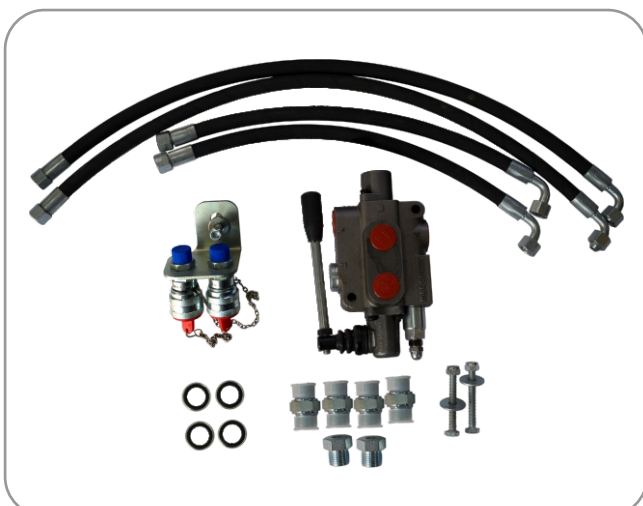
**AUXILIARY VALVE KIT
FOR MASSY FERGUSON**



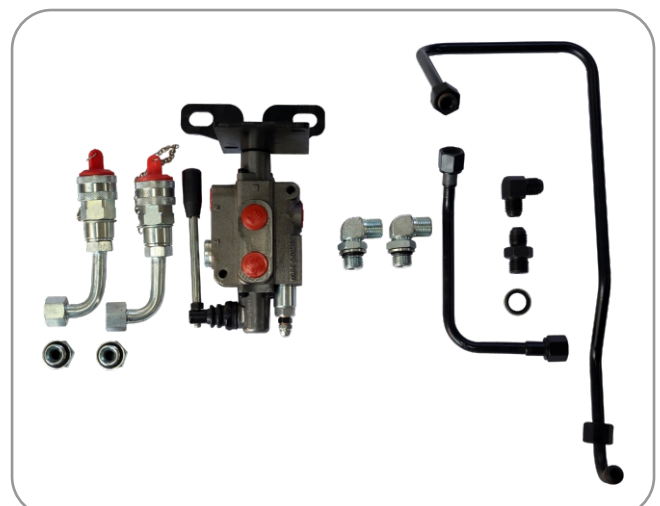
PLOUGH SIDE KIT



**AUXILIARY VALVE KIT
FOR NEW HOLLAND**



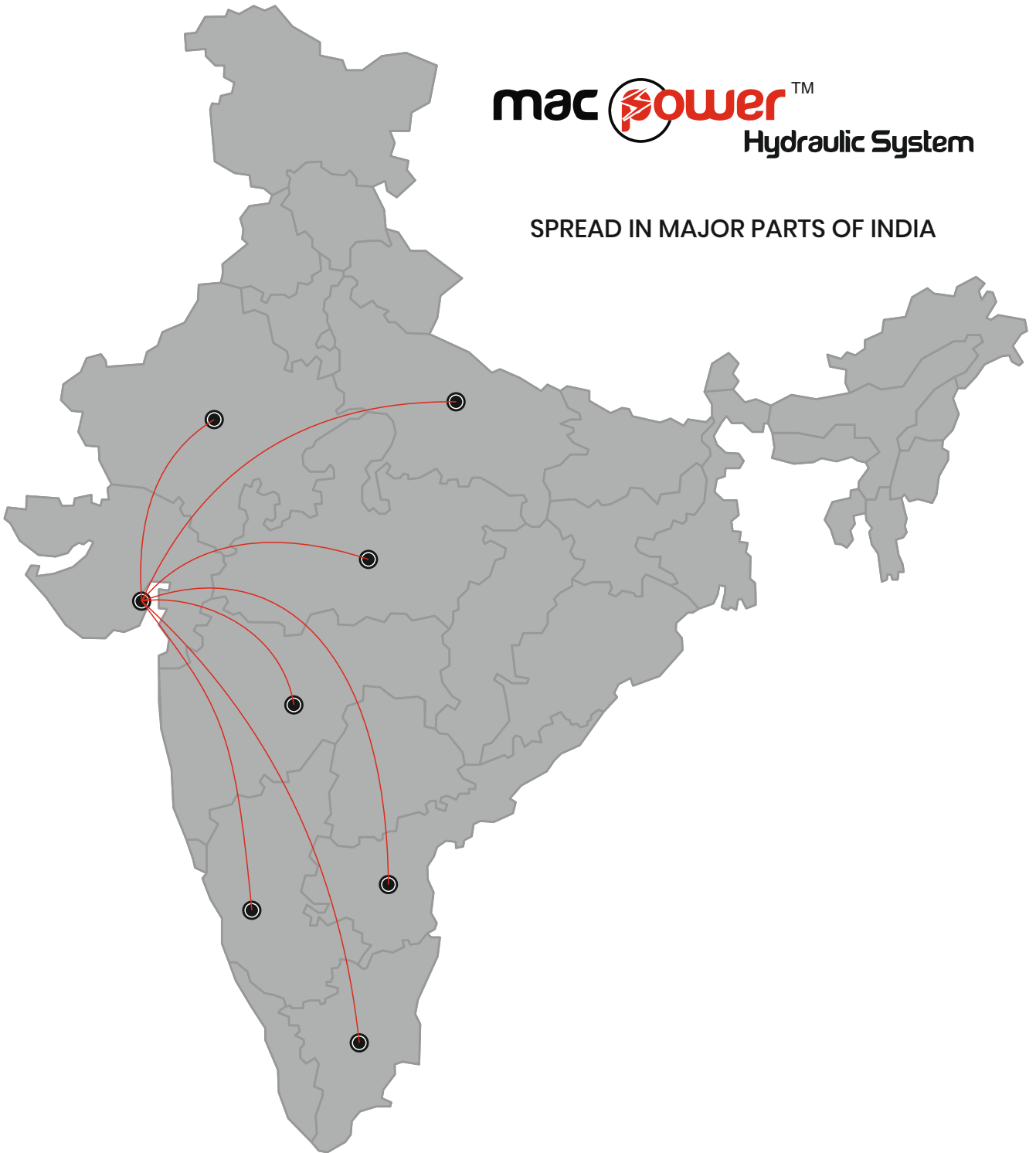
**REGULAR TRACTOR
SIDE KIT**



**AUXILIARY VALVE KIT
FOR EICHER**



SPREAD IN MAJOR PARTS OF INDIA



RAJAN MISTRY
+91 99780 04634

ANKIT MISTRY
+91 97245 82865

Macpower Hydraulic System

Paliyad Road, Botad GIDC, Plot No. 46, Botad - 364710 (Gujarat) INDIA

Email : macpowerbotad@gmail.com | Web : www.macpowerhydraulics.com